



British
Thoracic
Society

Webinar – Session 1

A guide to delivering a successful tobacco dependency treatment service

Thursday 24 February 2022

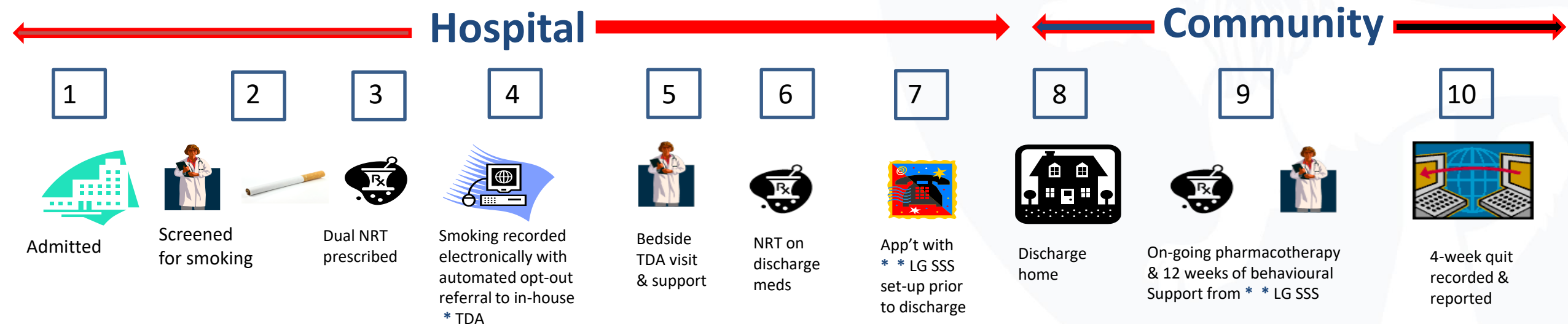
Treating Tobacco Dependency in Acute Hospitals

Screen and treat tobacco dependency :

1. ***Acute Hospital in-patients**
2. Mental Health in-patients
3. Pregnant smokers
4. High risk community mental health
5. ***NHS staff**

Roll-out 2021-22 (complete by 2023-24)

Fully funded via ICS's ~ £75m by 2023-24



* TDA = tobacco dependency advisor

* * Local government stop smoking service or community pharmacist

Regional Contacts

North East and Yorkshire: Joanna Feeney joanna.feeney@dhsc.gov.uk
North West: Rachel Swindells rachel.swindells@dhsc.gov.uk
Midlands: James Gillies James.Gillies@dhsc.gov.uk
East of England: Claire Parker Claire.Parker@dhsc.gov.uk
London: Alanna Molloy Alanna.Molloy@dhsc.gov.uk
South East: Naseem Mushtaq naseem.mushtaq@dhsc.gov.uk
South West: Natalie Sims natalie.sims@dhsc.gov.uk

BTS

Melanie Perry
Melanie.perry@brit-thoracic.org.uk
Sanjay Agrawal
sanjay.agrawal@uhl-tr.nhs.uk

Webinar	Organiser	Date	Time
Identify the Funds and Partners	BTS	24 th February	13:00 – 13:45
Implementing smokefree mental health settings	ASH	2 nd March	1:30 – 3:00
Plan the Programme/Education & Training	BTS	3 rd March	13:00 – 13:45
Supporting pregnant smokers: Implications of new NICE guidance and the NHS Long Term Plan	ASH/NCSCCT	16 th March	10:30 – 11:30
Deliver the Programme	BTS	21 st March	13:00 – 13:45
Building a Business Case for the CURE Model	ASH	23 rd March	10:30 – 11:15
Metrics to support LTP rollout	ASH	31 st March	11:00 – 12:00
Be a Visible Champion/Make the Project Sustainable	BTS	31 st March	13:00 – 13:45
Pharmacotherapy to support smoking cessation	ASH	6 th April	10:00 - 11:30
Using e-cigarettes to support smoking cessation in the NHS	ASH	TBC	TBC



FutureNHS platform

<https://future.nhs.uk/system/login?nextURL=%2Fconnect%2Eti%2Fhome%2Fgrouphome>

How to get the Respiratory voice heard

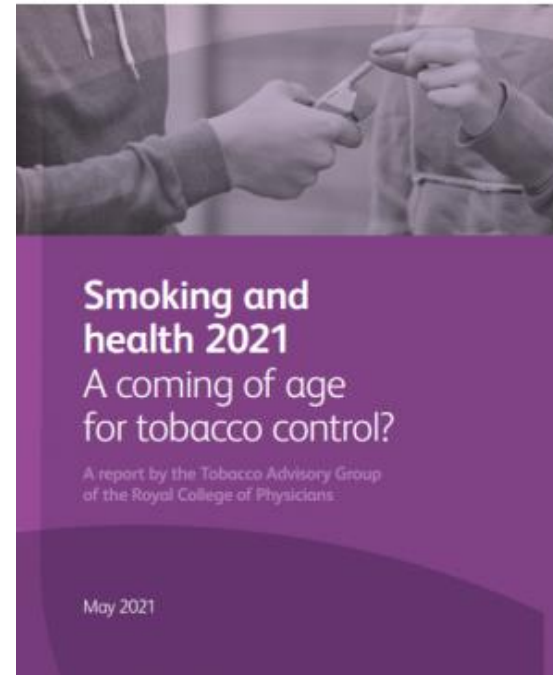
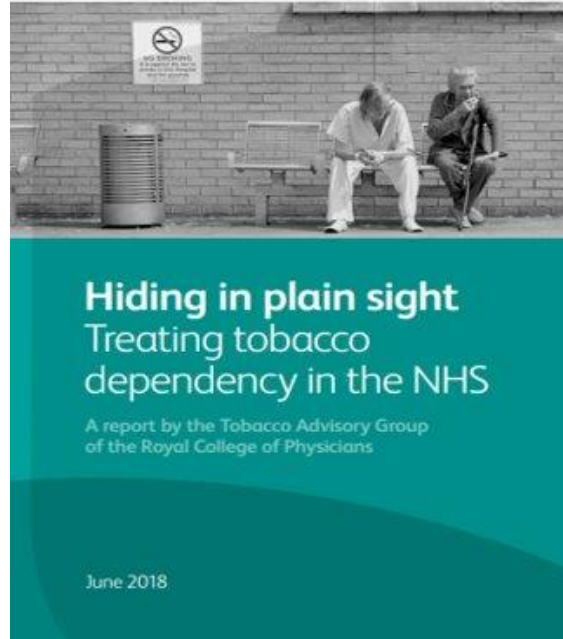
Dr Charlie Sharp

Respiratory Consultant and ICS Tobacco Dependency Clinical Lead

Gloucestershire



The NHS Long Term Plan

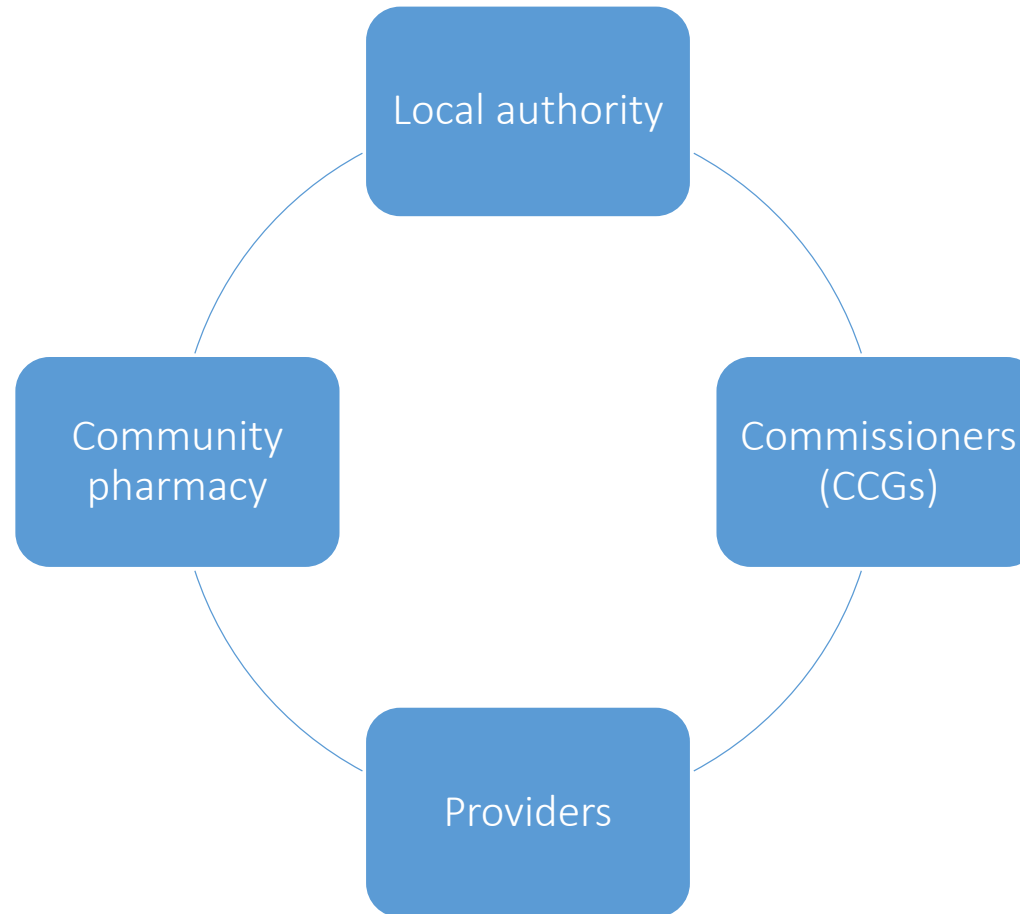


A National Five Year Plan for Lung Health

A five year plan to create a society where everyone can live with healthy lungs for as long as possible and have the best chance of living well, or recovering, when lung disease develops.

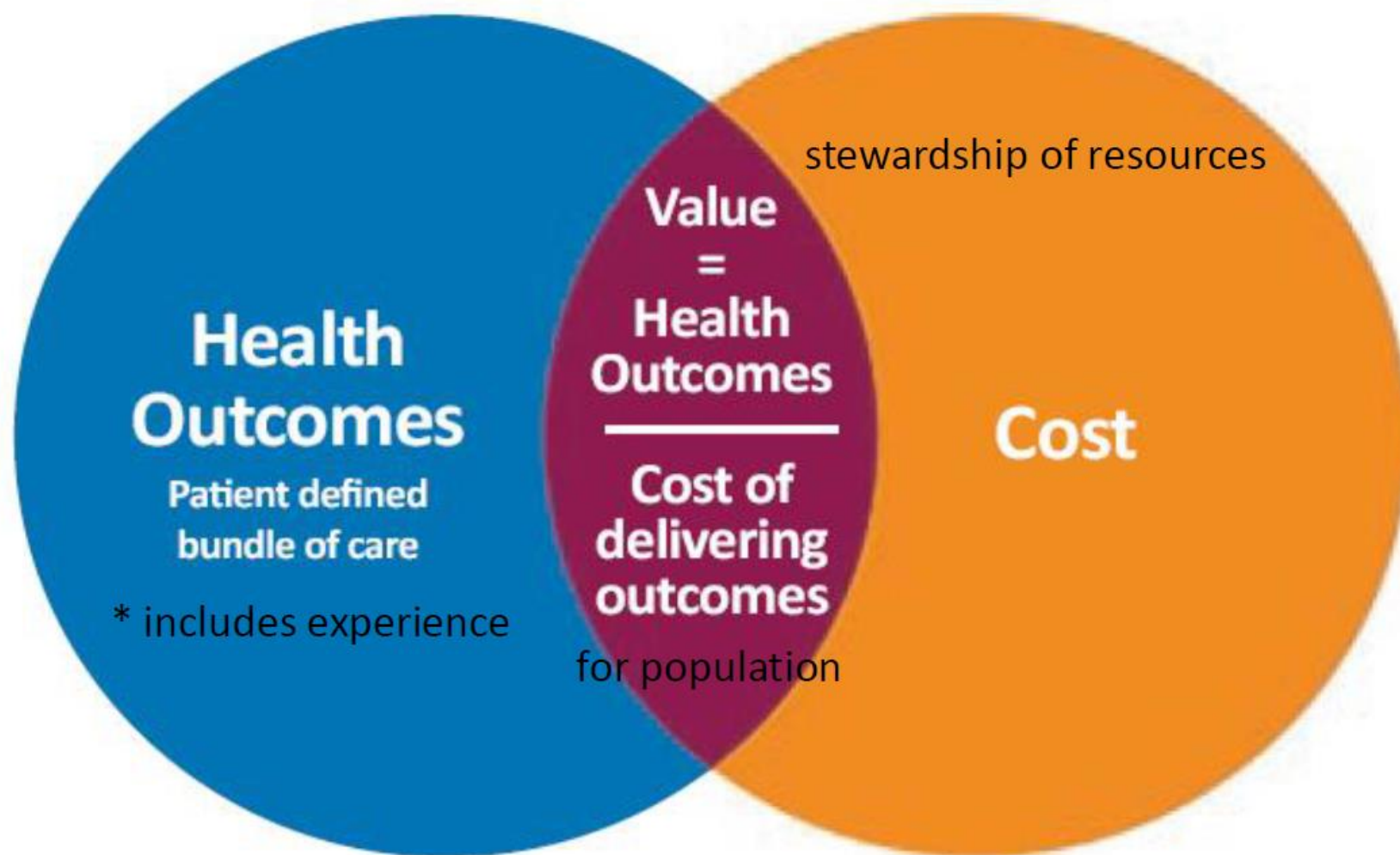
Be fluent in the contexts

Understand the money (and the costs)



What Is Value in Health Care?

Michael E. Porter, Ph.D.



Economic impact of smoking

Smoking

Health economic analysis for the 'CURE Project' pilot: a hospital-based tobacco dependency treatment service in Greater Manchester



Matthew Evison¹, Julian Cox², Freya Howle³, Kathryn Groom³, Ryan Moore³, Hannah Clegg³, Cheryl Pearce¹, Michael Rutherford¹, Alex Tempowski⁴, Seamus Grundy⁵, Beth Turnpenny⁶, Hou Law⁷, Ram Sundar⁸, Al-Tahoor Butt⁹, Muntasir Abdelaziz⁹, Jane Coyne¹⁰, Andrea Crossfield¹⁰, Claire O'Rourke³ and David Shackley¹¹

Correspondence to Dr Matthew Evison; m.evison@nhs.net

Smoking leads to a £11.5 billion loss p.a. in economic output among male smokers

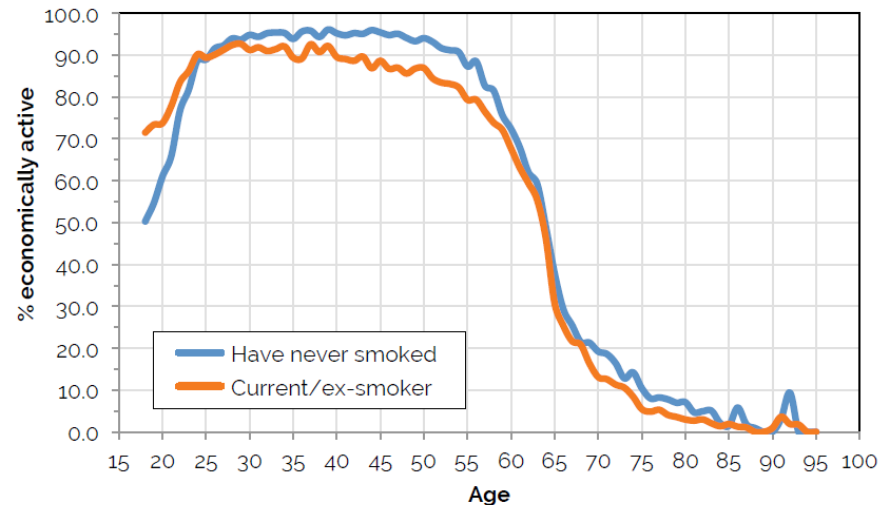


Figure 1: Percentage of men who [blue] have never smoked or [orange] are current/ex-smokers, that are economically active, by age

Smoking leads to a £7.6 billion loss p.a. in economic output among women smokers

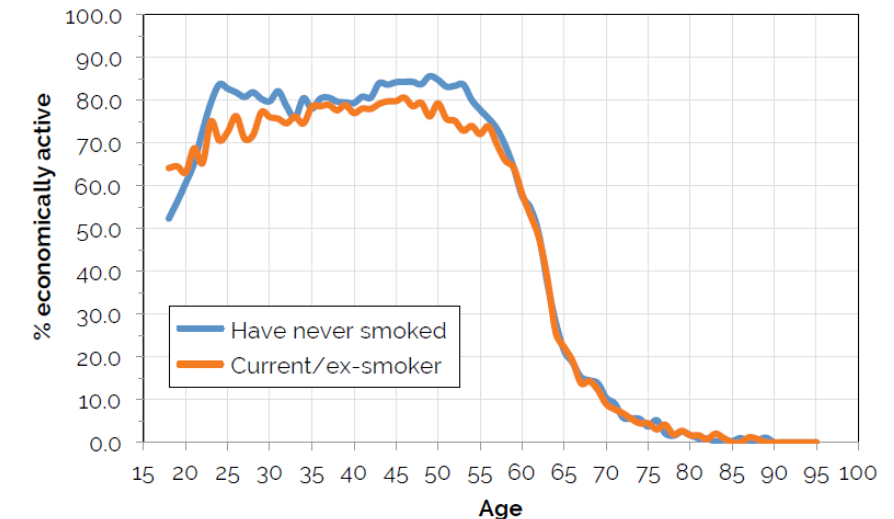


Figure 2: Percentage of women who [blue] have never smoked or [orange] are current/ex-smokers, that are economically active, by age

Start
conversations
in your own
organisation

Executive lead/Strategic sponsor

Quality leads

Pharmacy

Existing work (maternity, mental health)

CLEAR self-assessment

Who are the key players outside the organisation?

ICS Prevention or
Tobacco Control
steering group

Local authority

- Commissioning lead for TTD
- Public Health Prevention Lead

HPSA Regional TTD
project manager

Community Pharmacy

Respiratory Clinical
Network

Local Stop Smoking
service lead

Make yourself known!



SEEK
INTRODUCTIONS



PUBLICISE BTS AUDIT
RESULTS AND TRACK
PROGRESS



BE A CHAMPION FOR
TTD IN EVERYTHING
YOU DO



PROMOTE VBA
TRAINING



BUILD NETWORKS



Office for Health
Improvement
& Disparities

NHS Tobacco Treatment Services: Identifying the Partners & Key roles

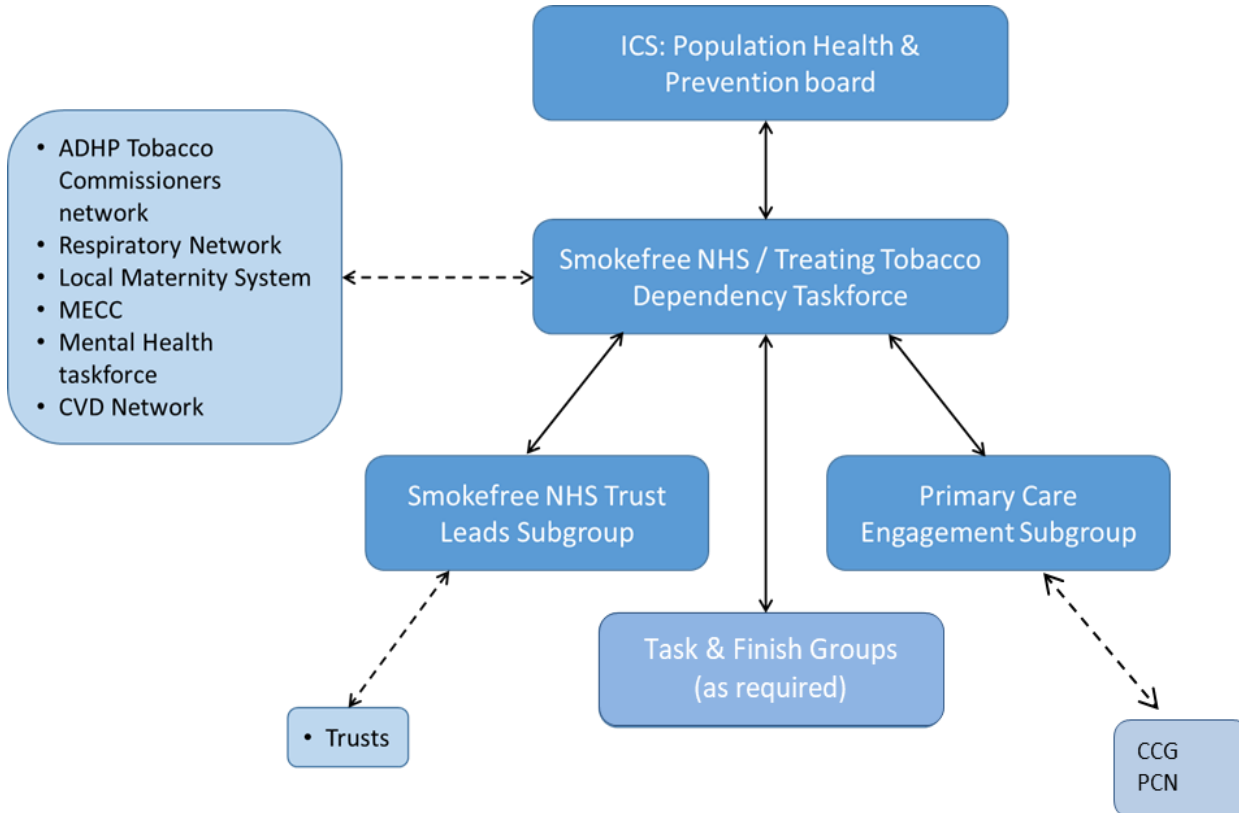
Joanna Feeney,

**OHID Regional Tobacco Control Programme Manager NHS Long
Term Plan**

Objectives:

- ICS role in supporting delivery of NHS Tobacco Dependency Treatment Services, along with the key partners and interdependencies
- Key roles within Trusts to implement and embed NHS Tobacco Dependency Treatment Services

ICS Tobacco Dependency Strategic Group



Multi-disciplinary Strategic Group:

- Facilitates & drives forward the Tobacco workstream on behalf of the ICS
- Ensuring that the NHS Tobacco workstreams are part of a system wide strategy
- Interdependencies to other workstreams and groups

Key Roles:

- ICS SRO
- Chair of Steering group
- ICS Clinical lead
- ICS Programme Manager
- CCG Finance lead

Trust Key roles:

Executive Sponsor

Understanding and endorsement of all aspects of treating tobacco dependency agenda should be provided at Executive level.

The role of the Executive Sponsor is;

- To champion the Tobacco workstream at the Executive board, including advocating and securing support from different departments.
- To provide an escalation route and high-level dispute / problem resolution to support the unblocking of barriers during the implementation.
- Serve as Senior Responsible Officer and contact for ICS in relation to programme assurance.

Clinical Lead

The role of the Clinical lead within a Trust is to;

- Drive forward the establishment of a systematic, opt-out onsite tobacco treatment service, providing oversight to the scoping and development of delivery plan.
- Champion tobacco dependency and treatment at Trust level and will drive engagement with clinician across different departments within the Trust.
- Provide clinical support to project managers and operational Tobacco Treatment Services team
- Oversee any key performance indicators.
- Work with the Executive Sponsor to highlight and resolve anticipated challenges.

Trust Key roles:

Project Lead

Dedicated role within the Trust to support the Clinical lead and operational implementation.

Ensuring that across the Trust all operational enablers are in place to support delivery of onsite Tobacco Treatment Services including:

- Policy
- Training
- Communication
- Medication Pathways
- Discharge Pathways
- Data Capture & Reporting solutions in place
- Staffing & Recruitment
- Monitoring & evaluation

Trust local steering group:

- To provide strong leadership & management support to support the implementation of the Trusts Smokefree policy
- To establish onsite NHS Tobacco Dependency Treatment service & monitor progress against key milestones, reporting metrics; such as engagement and quit outcomes and changes in smoking prevalence
- To monitor & manage smoking-related incidents, providing a forum for raising and addressing issues arising from smokefree sites
- To ensure compliance with [NICE Guidance NG209](#) and other national guidance, as well as all relevant legislation,
- To provide assure the Trust Board, and escalating any risks through to the Executive Sponsor

Treating tobacco dependency Trust steering group: Suggested membership



- Trust Tobacco Dependency Steering group should be chaired by the Clinical lead & feed into existing Trust governance structures to provide escalation to Executive board
- Clear remit & ToR
- Not exhaustive – membership may vary by individual Trust
 - Motivated, passionate
 - Influence colleagues
 - Multi disciplinary
 - Understand the principles of treating tobacco dependency (not a restrictive, forcing quitting upon people)



IN PARTNERSHIP WITH



British
Thoracic
Society

Many thanks for your time and attention